

# SQL Murder Mystery

Source : <https://mystery.knightlab.com/index.html#experienced>

## 1 Introduction

A crime has taken place and the detective needs your help. The detective gave you the crime scene report, but you somehow lost it. You vaguely remember that the crime was a **murder** that occurred sometime on **Jan.15, 2018** and that it took place in **SQL City**. Start by retrieving the corresponding crime scene report from the police department's database.

Use your knowledge of the database schema and SQL commands to find out who committed the murder.

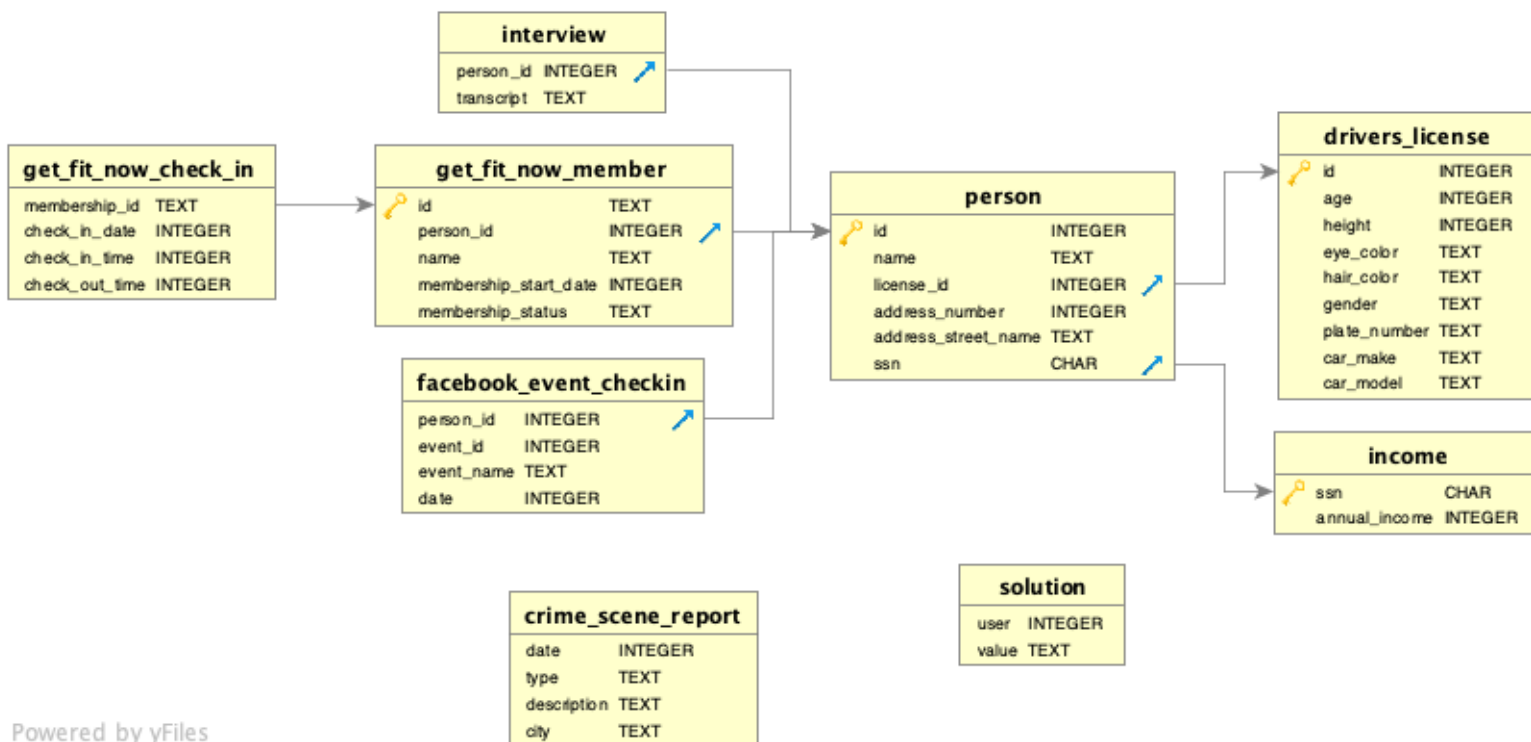
## 2 Data Base and schema diagram

Download DB :

[https://bfourlegnie.com/Tnsi\\_2020/cours/CHAP\\_SGBD/sql-murder-mystery.db](https://bfourlegnie.com/Tnsi_2020/cours/CHAP_SGBD/sql-murder-mystery.db)

and open it with DB Browser

schema diagram : [https://bfourlegnie.com/Tnsi\\_2020/cours/CHAP\\_SGBD/schema\\_murder.png](https://bfourlegnie.com/Tnsi_2020/cours/CHAP_SGBD/schema_murder.png)



Powered by yFiles

## 3 SQL commands

Use your knowledge of the database schema and SQL commands to find out who committed the murder. Take a paper and a pen. Write the list of SQL commands and the answers. When you think you know the answer, go to the next section.

## 4 Check your solution

Did you find the killer?

- 1 `INSERT INTO solution VALUES (1, 'Insert the name of the person you found here');`
- 2 `SELECT value FROM solution;`